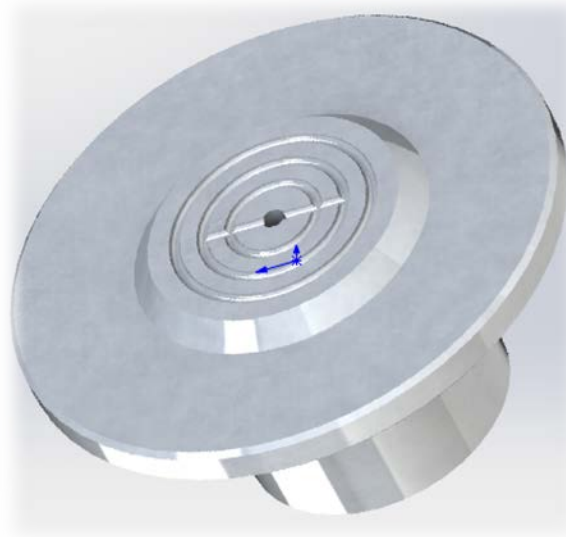


# Chuck Selection Guide



---

**SETCAS LLC**

**Address: 12546 CABEZON PLACE, SAN DIEGO, CA 92129 ,USA**

**Tel: +1 858-537-7743 Email: [paw@live.com](mailto:paw@live.com)**

## **MISSION**

**Create high-end equipment      Provide satisfied services**

## **CLTURE**

**Respect    Create    Contibute    Share**

### **Company profile:**

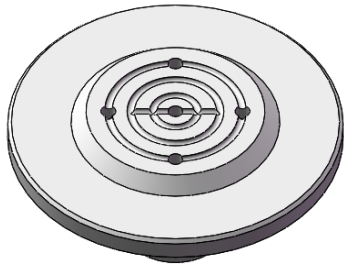
**SETCAS LLC is a new high-tech enterprise, mainly engaged in the research and development of semiconductor devices and electronic products.**

**The company specializes in mechanical design, software development, automatic control , and industrial design technologies.**

## Chuck Type Overview

The type A, B, C and D chuck are the customer's commonly used chucks, others need to be customized. Due to the wide variety, we only list a part here. If you have special needs, please contact us.

**Note: The delivery period of the chuck marked with no stock in the forms of the brochure is 1-2 weeks.**



1.1 A-Type Chuck



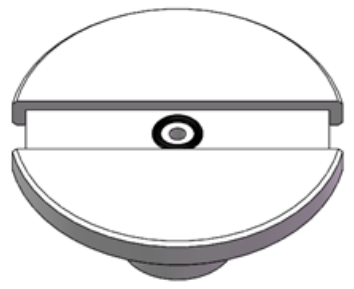
1.2 B-Type Chuck



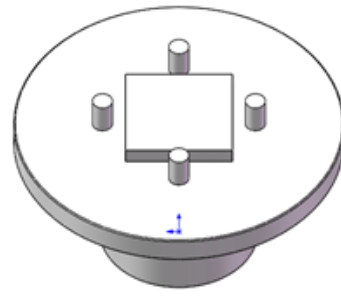
1.3 C-Type Chuck



1.4 D-Type Chuck



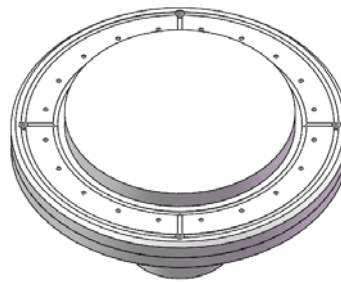
1.5 E-Type Chuck



1.6 F-Type Chuck



1.7 G-Type Chuck



1.8 H-Type Chuck

Fig 1 Type Overview of Spin Chuck



Table1 Parameter Table of A-Type Chuck

Model		Main Parameters				Whether in stock
Spin Chuck Model	Spin coater model	D1	D2	L	n	
SCA-5-7	KW-4A &KW-4B& KW-4BC &KW-4C	4	50	19	0	Yes
SCA-8-10		7	50	19	0	Yes
SCA-11-13		10	50	19	0	No
SCA-14-18		13	50	19	0	Yes
SCA-19-23		18	50	19	0	Yes
SCA-24-28		23	50	19	0	Yes
SCA-29-33		28	50	19	0	No
SCA-34-38		33	50	19	0	No
SCA-39-43		38	50	19	0	No
SCA-44-48		43	78	19	0	No
SCA-49-53		48	78	19	4	Yes
SCA-54-58		53	78	19	4	No
SCA-59-63		58	78	19	4	No
SCA-64-68		63	78	19	4	No
SCA-70-74		69	78	19	4	No
SCA-75-79		74	106	19	4	Yes
SCA-80-84		79	106	19	4	No
SCA-85-89		84	106	19	4	No
SCA-97-101		96	106	19	4	Yes
SCL-1In	KW-4L	21	90	46.5	0	Yes
SCL-1-2In		33.5	90	46.5	0	No
SCL-2In		46	90	46.5	0	Yes
SCL-2-3In		58.5	90	46.5	0	No
SCL-3In		71	90	46.5	0	Yes
SCL-3-4In		83.5	100	46.5	0	No
SCL-4In		96	115	46.5	0	Yes
SCL-4-5In		108.5	125	46.5	0	No
SCL-5In		121	140	46.5	4	No
SCL-5-6In		133.5	150	46.5	4	No
SCL-6In		146	165	46.5	4	Yes
SCL-6-7In		158.5	175	46.5	4	No
SCL-7In		171	190	46.5	4	No
SCL-7-8In	183.5	200	46.5	4	No	
SCL-8In	196	210	46.5	4	Yes	
SCE-1In	KW-4E	21	115	21.5	0	Yes
SCE-1-2In		33.5	115	21.5	0	No
SCE-2In		46	115	21.5	0	Yes
SCE-2-3In		58.5	115	21.5	0	No
SCE-3In		71	115	21.5	0	Yes
SCE-3-4In		83.5	115	21.5	4	No

SCE-4In	KW-4E	96	115	21.5	4	是
SCE-4-5In		108.5	125	21.5	4	否
SCE-5In		121	140	21.5	4	否
SCE-5-6In		133.5	150	21.5	4	否
SCE-6In		146	165	21.5	4	是
SCE-6-7In		158.5	175	21.5	4	否
SCE-7In		171	190	21.5	4	否
SCE-7-8In		183.5	200	21.5	4	否
SCE-8In		196	210	21.5	4	是

# B-Type Chuck

## ➤ Application

The B-type chuck is mainly suitable for rectangular substrate, such as slide and coverslip. For specific selection, please refer to Figure 5 and Table 2.

## ➤ Type Selection

### • Type Interpretation



Fig 4 B-Type Chuck Interpretation

### • Main Parameter

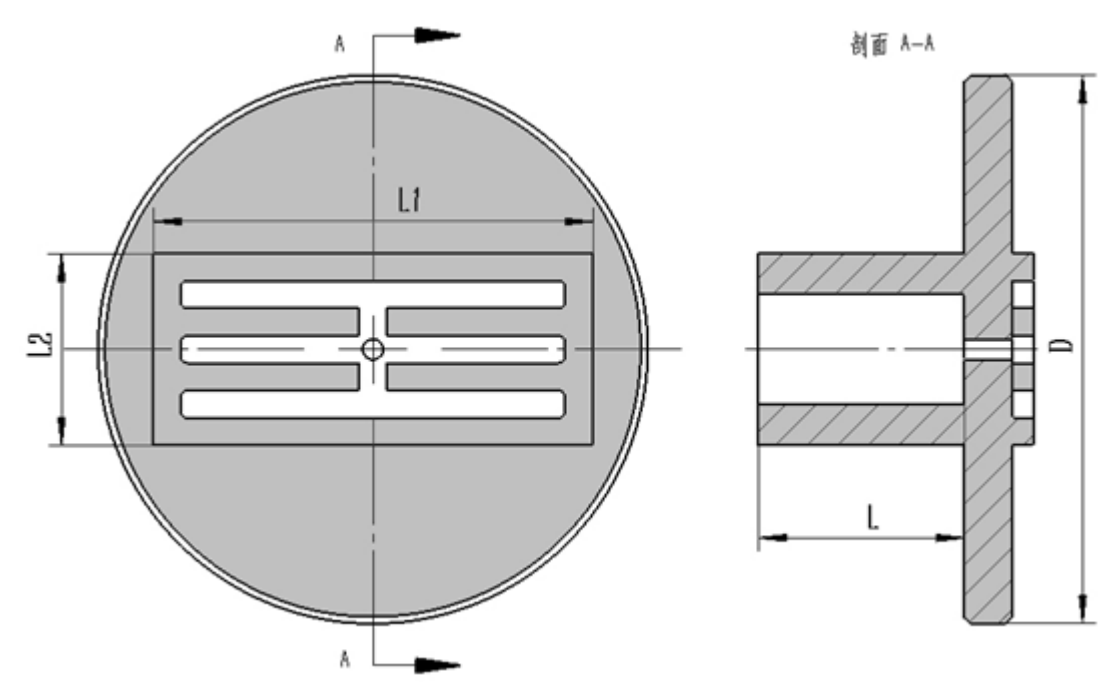


Fig 5 B-Type Chuck Diagram

Table2 Parameter Table of B-Type Chuck

Model		Main Parameter				Whether in stock
Spin Chuck Type	Spin Coater Type	L1	L2	L	D	
SCB-9-13	KW-4A &KW-4B & KW-4BC &KW-4C	8	8	19	50	No
SCB-14-18		13	13	19	50	No
SCB-19-23		18	18	19	50	Yes
SCB-7-11-28-32		27	6	19	50	Yes
SCB-24-28-75-79		74	23	19	85	Yes

## C-Type Chuck

### ➤ Application

The C-type chuck is basically the same use with the A-type chuck (mainly used for round or rectangular silicon wafer). The C-type chuck can obtain higher vacuum suction, which can effectively prevent the substrate fling out and the vacuum passage blocked. The spin coater with heating function is not suggested using the C-Type chuck. For specific selection, please refer to Figure 7 and Table 3.

### ➤ Type Selection

#### • Type Interpretation

SCO-□-□  


Fig 6 C-Type Chuck Interpretation

#### • Main Parameter

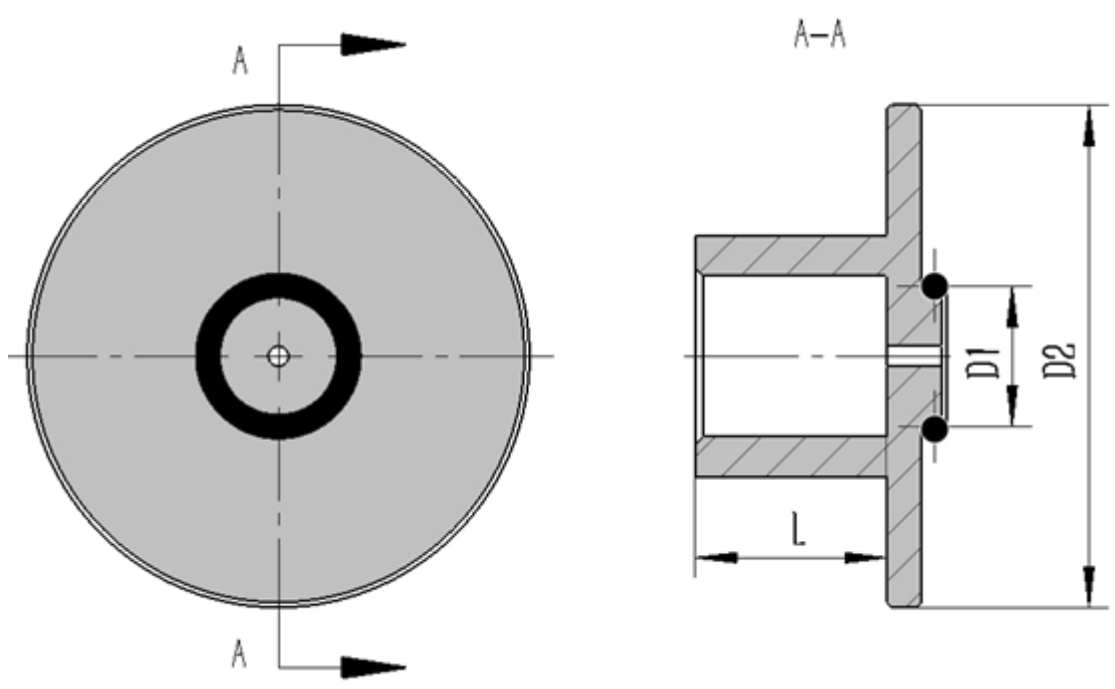


Fig 7 C-Type Chuck Diagram

Table3 Parameter Table of C-Type Chuck

Type		Main Parameter				Whether in stock
Spin Chuck Type	Spin Coater Type	D1	D2	L	O 圈线径	
SCO-10-15	KW-4A & KW-4B&	6.5	50	19	Φ1.9	Yes
SCO-20-25	KW-4BC & KW-4C	14	50	19	Φ 2.4	Yes



## D-Type Chuck

### ➤ Application

The D-Type is mainly suitable for substrate that is fixed by pasting without vacuum suction. For specific selection, please refer to Figure 9 and Table 4.

### ➤ Type Selection

#### • Type Interpretation

SCD-□-□  


Fig 8 D-Type Chuck Interpretation

#### • Main Parameter

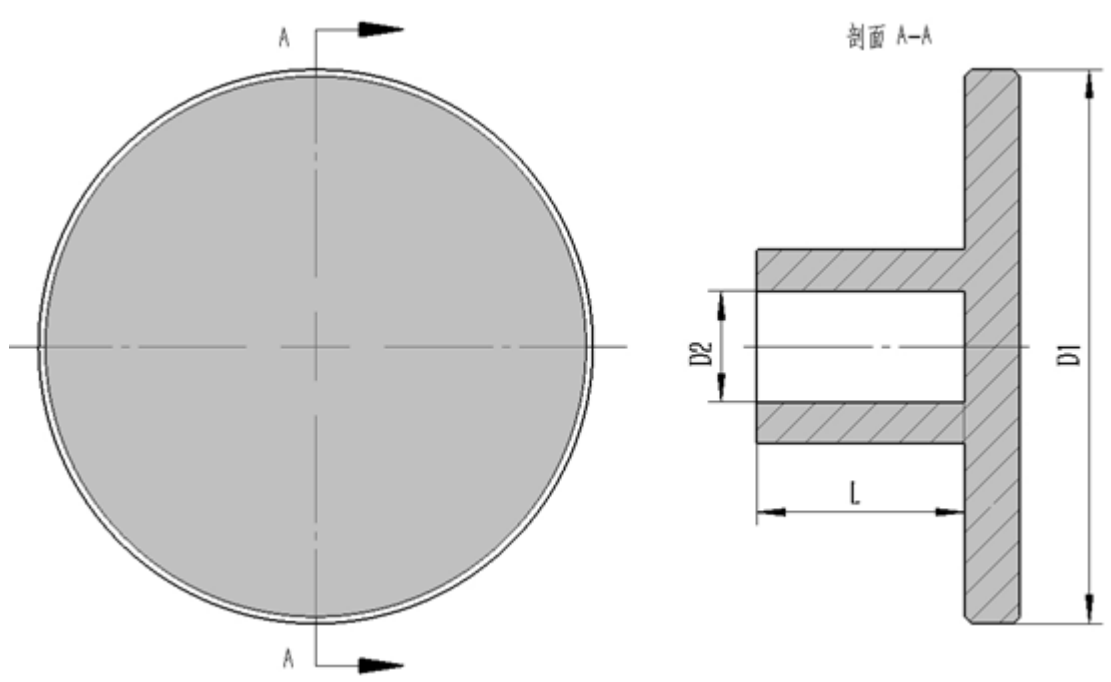


Fig 9 D-Type chuck Diagram

Table4 Parameter Table of D-Type Chuck

Type		Main Parameter			Whether in stock
Spin Chuck Type	Spin Coater Type	D1	D2	L	
SCD-5-44	KW-4A & KW-4B & KW-4BC & KW-4C	50	8	19	No
SCD-44-68		78	8	19	No
SCD-70-84		85	8	19	No
SCD-80-100		106	8	19	No

## **Customization**

---

The type A, B, C and D chuck of other sizes can be customized for different spin coaters. If you need to design and custom the chuck in the selection guide, or the other special chuck (flexible substrate, ring substrate, etc.), please contact us.

## **Feedback**

---

You are welcome to provide valuable comments and suggestions for our company and products, please contact us if you have any needs!

- Tel: +1 858-537-7743
- Email: [paw@live.com](mailto:paw@live.com)